



Tracer Study Report (Graduates of 2016)

Submitted to:

University Grants Commission

Sanothimi, Bhaktapur

Submitted by:

Mahakavi Devkota Campus

Sunwal, Nawalparasi

10th June, 2018



Acknowledgement

Mahakavi Devkota Campus could not have undertaken this tracer study without the continuing support of University Grants Commission Nepal and we would like to express our gratitude to graduates of 2016 of MDC who provided us all the required information for the completion of this report. Our thanks also goes to MDC administration, faculty members and HERP-Task sub-committee for their kind cooperation and valuable suggestions.



This report has been prepared as the **Tracer Study Report** of the graduates students from Mahakavi Devkota Campus, Sunwal, Nawalparasi of 2016 from the Faculty of Management, Education and Humanities & Social Science. The report has been divided into five chapters. The first chapter is introductory. The Second one presents and analyses the data. The third chapter provides the major findings of the report. The fourth chapter provide major implication to institutional reforms and fifth chapter draws the conclusion and suggests some recommendations. The aim of writing this report was to find out the issues related to the quality and relevance of higher education. The study was also aimed to use the report for the formulation and amendments of its strategic plan as per the needs and expectation of market and the society. In order to get the needed information, both quantitative and qualitative methods were employed for data collection and a questionnaire for interviewing was conduct to make sure the right information could be collected. The notice for tracer study was shared using the social media/ face book. Those who aren't in contact were contacted through telephone. Required information was collected, individual forms were filled through face to face interview & telephone conversation. All the selected information was compiled, analyzed and evaluated and the final report was prepared.



Table No.	Topic	Page No.
1	Total Graduates of the year 2016	5
2	The Caste wise Composition of Tracer Study	5
3	Employment Status of the Graduates	5
4	Relevance of the Program to professional requirements	9
5	Effectiveness of Extracurricular Activities	9
6	Effectiveness on Problem Solving Skill	10
7	Effectiveness on Work Placement / Attachment	10
8	Effectiveness on Teaching Learning Environment	11
9	Effectiveness on Quality of Education delivered	11
10	Teacher Student Relationship status	11
11	Strengths & Weakness of Library services	12
12	Strengths & Weakness of Lab Services	12
13	Suggestions / Recommendations for the betterment of Institution	13



Table No.	Topic	Page No.
Figure 1 :	Faculty and Gender wise composition of graduates	6
Figure 2:	Composition of Graduates in Management	7
Figure 3:	Employment Status of Graduates in Management	7
Figure 4:	Composition of Graduation in Education	7
Figure 5:	Employment Status of Graduates of Education	8
Figure 6:	Composition of Graduates of Humanities & Social Science	8
Figure 7:	Employment Status of Graduates of Humanities & Social Science	9



ABBREVIATIONS

MDC	Mahakavi Devkota Campus
UGC	University Grants Commission
T.U.	Tribhuvan University
E	Employed
U	Unemployed
S	Studying
No.	Number
BBS	Bachelor of Business Studies
B.Ed	Bachelor of Education
BA	Bachelor of Arts
EDJ	Educationally Disadvantage Janajaties
ED	Educationally Disadvantage
D	Dalit
HERP	Higher Education Reforms Project
%	Percentage
B.S.	Bikram Sambat
A.D.	Anno Domini



Table of Contents

Topic	Page No.
Acknowledgement	i
Executive Summary	ii
List of Tables	iii
List of Figures	iv
Abbreviations	v
Table of Contents	vi
Appendix	vii
CHAPTER – ONE: INTRODUCTION.....	1-3
1.1 Background of the Study.	1
1.2 Objectives of the Study	1-2
1.3 Institutional Arrangements to conduct Study	2
1.4 Graduate Batch Taken for the Study	2
1.5 Data collection - Instruments and Approach	2
1.6 Scope and Limitations of the Study	3
CHAPTER: TWO : Data Presentation and Analysis	4-9
2.1 Employment Status of the Graduates	4
2.1.1 The Catchment Area	4
2.2 The Profile of the Graduates	4-5
2.3 Employment Status of the Graduates	5-6
2.4 Faculty wise Analysis of Employment Status	6-9
2.4.1 Faculty of Management	6-7
2.4.2 Faculty of Education	7-8
2.4.3 Faculty of Humanities and Social Sciences	8-9
2.5 Strengths and Weaknesses of the Institutional Programs	9-13
CHAPTER: THREE	14-15
3. Major Findings	14-15
CHAPTER: FOUR	16
4. Implications to institutional Reforms	16
CHAPTER: FIVE: Conclusion and Recommendation	17
5.1 Conclusion	17
5.2 Recommendations.....	17



Appendix

- Annex: 1** Tracer Study Profile of Mahakavi Devkota Campus (Management)
- Annex: 2** Tracer Study Profile of Mahakavi Devkota Campus (Education)
- Annex: 3** Tracer Study Profile of MDC (Humanities & Social Science)

1. Introduction

1.1 Background of the Study.

Mahakavi Devkota Campus (MDC) is a not for profit institution established in 2060 B.S. (2003A.D.). The institution is located in Nawalparasi district at Sunwal Municipality. MDC is an innovative and emerging leader in higher education in this area. At present the institution has been providing higher education to the students of Province No.5. The college has been offering its services in the stream of Management, Education and Humanities & Social Science at Bachelor levels.

MDC has already conducted its first Graduate Tracer Study program of the graduates of 2015 following the suggestions and inspiration of UGC. This study is its second attempt and the continuation of its regular tracer study program. The aim of this study is to help the institution find out the where about of its graduates and identify the effectiveness of the program offered to them as well as gather feedbacks for further improvements.

The study has focused on the quality of higher education service provided to the students and the conditions under which the graduates have been employed and its role in job-seeking, the length of time graduates took before getting employed and how their areas of work are related to the programs offered by the college. Additionally, the study is expected to help identify which programs are still relevant to current market demands and provide feedback for future improvements.

1.2 Objectives of the Study

The overall objectives of the study are to obtain a better understanding of the employment status of the graduates as well as to identify the issues related to employment experiences, expectations and aspiration of graduates. One of its aim is also to find out the issues related to the quality and the relevance of higher education. The study has also aimed at using the study report for the formulation and amendments of its strategic plan as per the needs and expectation of market and the graduates. Thus, the study will explore the following:

- Investigate employment status of the graduates of 2016.
- Find out the kinds of programs the graduates are pursuing afterwards.



- Identify the difficulties faced by graduates for the placement in the market after the completion of the program.
- Relate the experience and views of graduates as they evaluate MDC teaching and learning materials, institutional facilities and curriculum, in order to plan for future improvement.

1.3 Institutional Arrangements to conduct Study

MDC has been selected for the Higher Education Reform Project by UGC on nationwide competition on second phase. Since, its selection it has been conducting various assigned tasks to it and preparation of Graduates Tracer Study Report is one of them. MDC has already conducted its first graduates Tracer Study Report of 2015 & second one 2016 is going on now.

1.4 Graduate Batch Taken for the Study

Although, 2016 the total number of graduates in this institution is 53 from different faculty i.e. Management, Education & Humanities & Social Science which we are going to study about tracer of them.

1.5 Data collection - Instruments and Approach

The study has focused on the quality of higher education service provided to the students and the condition under which the graduates have been employed and its role in job-seeking, and how their areas of work are related to the programs offered by the college. In addition, the study is expected to help identify which programs are still relevant to current market demands and the findings of the study are to analyze the strengths and weaknesses of the College programs, and the relationships between education/ training and labor market needs. Hence, the methodology for this study is driven by the above issues and it is supposed to promote better understanding of the graduates' employability.

In order to get the needed information, both quantitative and qualitative methods were employed for data collection and a questionnaire for interviewing was conduct to make sure the right information could be collected. The Tracer Study subcommittee collected the graduate list of 2016 from the Faculty of Management, Education and Humanities & Social Science. The notice for tracer study was shared using the social media/ face book. Those who couldn't come in contact were contacted through telephone and email. All the selected information was compiled, analyzed and evaluated and the final report was prepared.



1.6 Scope and Limitations of the Study

The total number of the graduates in 2016 from different streams of Mahakavi Devkota Campus was 53. The graduates from Faculty of Education were 31. The graduates from Faculty of Management were 8. The graduates from Faculty of Humanities and Social Sciences were 14. Although the study includes only 53 graduates, out of which 45 graduates involved to study this report which is 84.9 % on total.

The study was made upon the graduates of 2016 MDC. It had following limitation.

- This tracer study was conducted to the graduates of 2016 of MDC only.
- The study was conducted within a time period.
- The graduates who couldn't be reached / contacted had been left out in this study.
- Face to face interview, social media, and telephone contact/conversation were the key tools of data collection.

2. Data Presentation and Analysis

2.1 Employment Status of the Graduates

The institution (MDC) has taken the graduates of 2016 for this Tracer Study as it had already conducted its first tracer study of the year 2015. This Tracer Study is carried upon the graduates of Mahakavi Devkota Campus from the Faculty of Management, Education & Humanities & Social Science. The total numbers of the graduates in 2016 were 53. The graduates from Faculty of Education were 31, Out of which 24 were the female graduates and 7 were male graduates. Out of 31, 7 graduates belonged to educationally disadvantaged groups and 3 of them were dalits. The graduates from Faculty of Management were 8, Out of which 4 were the female graduates and 4 were male graduates. Out of 8, 1 graduate belonged to educationally disadvantaged groups. The graduates from Faculty of Humanities and Social Sciences were 14, Out of which 5 were the female graduates and 9 were male graduates. Out of 14, 4 graduates belonged to educationally disadvantaged groups. 1 of them was dalit.

2.1.1 The Catchment Area

Mahakavi Devkota Campus is located in the Nawalparasi district. The Campus is providing higher education courses to the students surrounding this area. The catchment area of Sunwal Municipality, , Ramgram Municipality, Sarawal Rural Municipality, Nawalparasi, Devdaha Municipality, Rupandehi and other nearest areas.

2.2 The Profile of the Graduates

The total number of the graduates in 2016 from different streams of Mahakavi Devkota Campus was 53. The graduates from Faculty of Education were 31 Out of which 24 were the female graduates and 7 were male graduates. Out of 31, 7 graduates belonged to educationally disadvantaged groups and 3 of them were dalits. The graduates from Faculty of Management were 8 Out of which 4 were the female graduates and 4 were male graduates. Out of 8, 1 graduate belonged to educationally disadvantaged groups. The graduates from Faculty of Humanities and Social Sciences were 14. Out of which 5 were the female graduates and 9 were male graduates. Out of 14, 4 graduates belonged to educationally disadvantaged groups and 1 of them was dalit. The table below shows the detailed information of the graduates of the year 2016.



Table 1: Total Graduates of the year 2016

S.N.	Program	Total Graduates	Female Graduates	ED Graduates	
				EDJ	Dalits
1.	BBS	8	4	1	-
2.	B.Ed.	31	24	9	3
3.	BA	14	5	4	1
Total		53	33	14	4

Source: MDC Administration 2016

Although the study population was 53, the institution could complete (reach out) only 45 out of total number of students which makes 84.90% of the total population. The table given below also shows that out of 53 graduates of the year 2016, 33 were females which make 62.26% of the total graduates. Similarly the janajati % of the graduates makes 26.41% of the total graduates and the dalit graduates makes 7.54 %.

Table 2: The Caste wise composition of Tracer Study

S.N.	Program	Caste		
		Brahmin / Chhetri	Janajati	Dalit
1.	BBS	4	4	-
2.	B.Ed.	12	16	3
3.	BA	5	8	1
Total		21	28	4

Source: Tracer Study Survey 2016

2.3 Employment Status of the Graduates

Amongst the targeted samples of 53 only 45 of them were able to be reached. Out of 45 students reached out, 18 graduates were male and 27 graduates were female. The percentage of male respondents was 40 % and female were 60 %. Out of the 45 respondents only 21 respondents were found employed where as 24 were found to be unemployed and 6 of them were found to be pursuing higher studies.

Table 3: Employment Status of the graduates

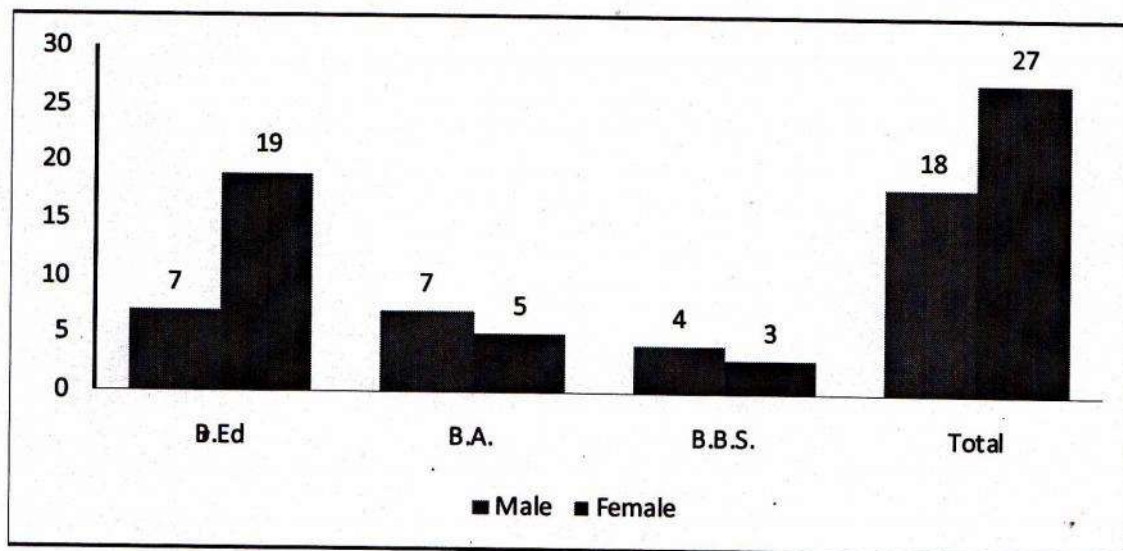
Faculty	Total no of Graduates approached	Male	Female	EDJ	Dalit	Employment	Unemployment	Studying
B.Ed	26	7	19	7	3	14	12	3
B.A.	12	7	5	2	1	5	7	2
B.B.S.	7	4	3	1	-	2	5	1
Total	45	18	27	10	4	21	24	6

Source: Tracer Study Survey, 2016



As given in Figure 1, 7 graduates of faculty of management were approached. Out of 7, 4 of them were male. The female graduates were 3 and EDJs 1. Male respondents in the faculty of management were 57.14% and Female respondents were 42.86% . Like wise 12 graduates of faculty of Humanities and Social Science were approached. Out of 12 ,7 of them were male and 5 were female and EDJs were 2 and dalit was 1 in number. Male respondents in the Faculty of Humanities & Social Science were 58.34% and Female respondents were 41.66%. Similarly 26 Graduates of Faculty of Education were approached. Out of 26, 7 of them were male and 19 were female and EDJs were 7 and Dalits were 3 in number. Male respondents in the Faculty of Education were 26.92% and Female Respondents were 73.08%. The bar diagram and the figure given below provides the composition and employment of the graduates of 2016.

Figure No. 1 : Faculty and Gender wise composition of graduates



2.4 Faculty wise Analysis of Employment Status

2.4.1 Faculty of Management

Amongst the 8 graduates of Faculty of management only 7 of them could be approached. Out of 7 reached out 4 of them were male . The female graduates were 3 and EDJs 1. Only 28.57 % of them were employed and 71.43% were unemployed. 14.28% are found to be pursuing higher studies. were unemployed. The figure below shows the details related to the graduates of Faculty of Management.

Figure 2: Composition of Graduates in Management

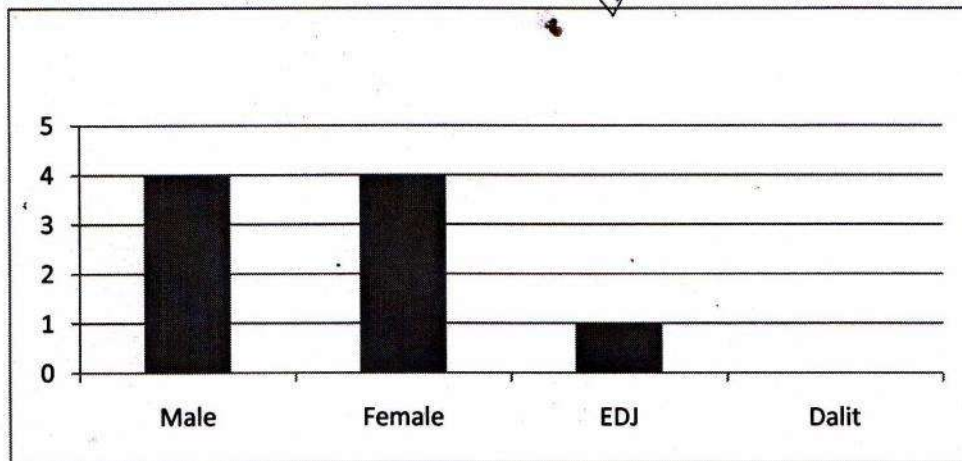
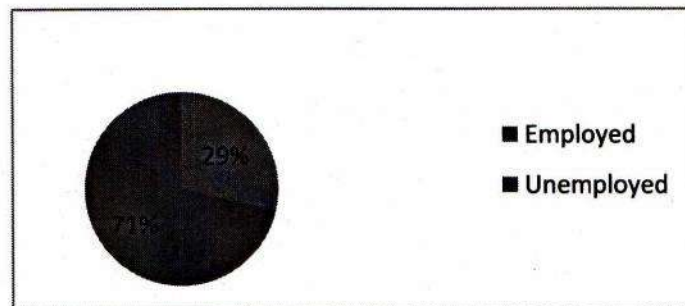


Figure 3: Employment Status of Graduates in Management



2.4.2 Faculty of Education

Amongst the 26 of the graduates of Faculty of Education approached, 7 of them were male. The female graduates were 19 and EDJs 7 and Dalits 3 only 53.85 % of them were employment and 46.15 % were unemployment. 11.54% are found to be pursuing higher studies.

Figure 4: Composition of Grduation in Education

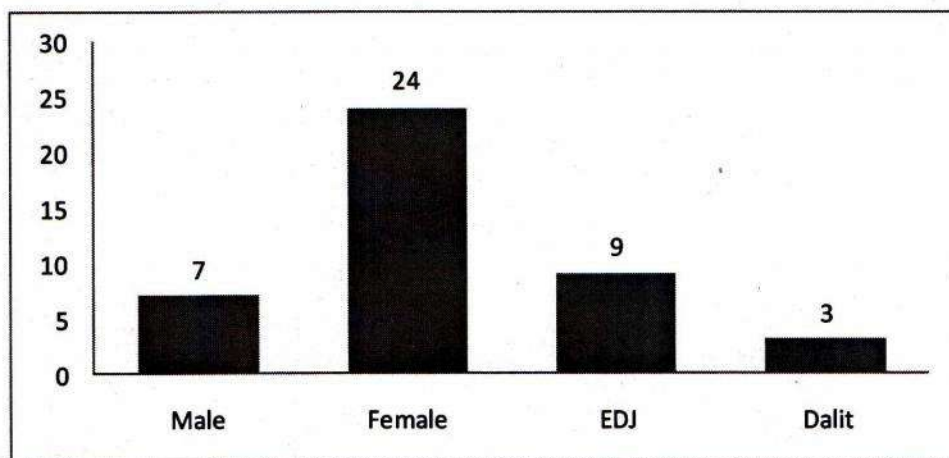
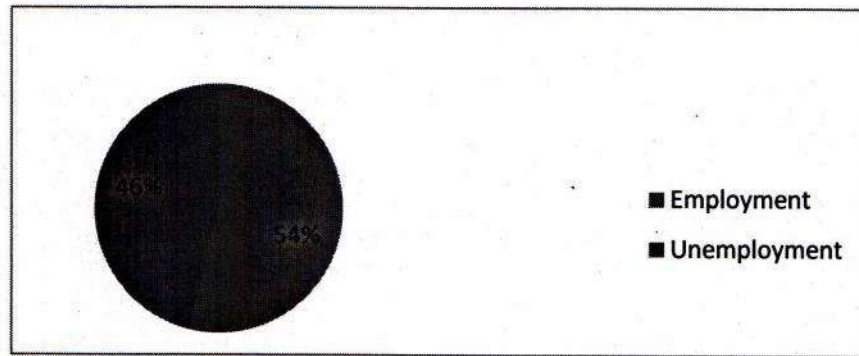


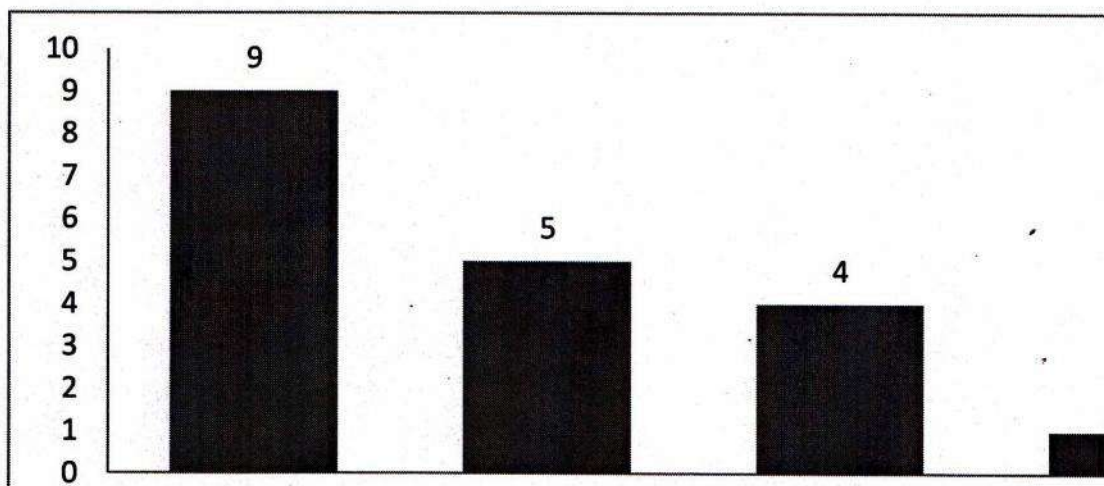
Figure 5: Employment Status of Graduates of Education



2.4.3 Faculty of Humanities and Social Sciences

The graduates from Faculty of Humanities and Social Sciences were 12. Out of which 7 were male graduates and 5 were female graduates. Out of 12 respondents 41.67% were employed and 58.33% were unemployment. 16.67% found to be pursuing higher studies.

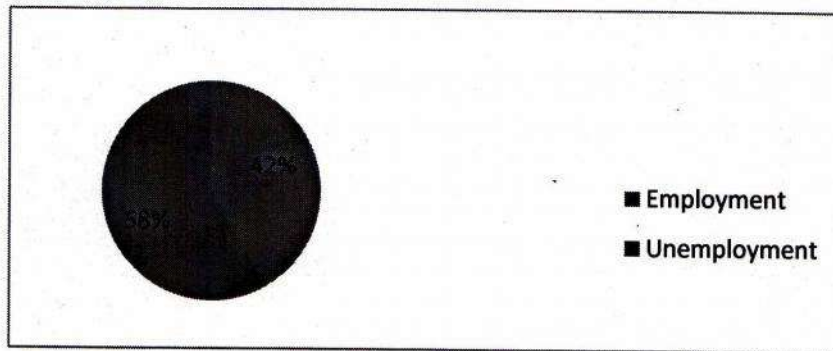
Figure 6: Composition of Graduates of Humanities & Social Science



The graduates from the Faculty of Humanities and Social Sciences were both working and pursuing higher studies. The figure given below shows that only 27.78% of the graduates were employed as teachers, social mobilizes and on various organizations. 72.22% of the graduates from the Faculty of Humanities and Social Sciences were unemployed. Among the graduates 16 of them were found pursuing higher studies at MDC and other institutions.



Figure 7: Employment Status of Graduates of Humanities & Social Science



2.5 Strengths and Weaknesses of the Institutional Programs

The graduates were also asked about the strength and weakness of the program of professional requirements, problem solving ability, learning environment, quality education delivered, teacher students relationship, library /lab offered to them. The table given below provides the major strengths and weaknesses of the institutional program.

Table 4: Relevance of the program to professional requirements

S.N.	Program	Relevance of the program to your professional requirements					
		Very Weak	Weaker	Weak	Good	Better	Excellent
1	BBS	-	1	3	2	1	-
2	B. Ed.	-	7	6	8	5	-
3	BA	1	4	4	2	1	-
Total		1	12	13	12	7	-

Source: Tracer Study Survey 2016

The graduates were also asked about the relevance of the program to meet their professional requirements. 26.67% of the students responded that the program was to meet their professional requirements. Whereas 15.56% said that it was better. 28.88% told that weak.

Table 5: Effectiveness of Extracurricular activities

S.N.	Program	Relevance of the program to your professional requirements					
		Very Weak	Weaker	Weak	Good	Better	Excellent
1	BBS	-	-	3	4	-	-
2	B. Ed.	-	3	14	7	2	-
3	BA	1	-	6	5	-	-
Total		1	3	23	16	2	-

Source: Tracer Study Survey 2016



The graduates were also asked about the strengths and weakness of the number of extra – curricular activities conducted by the institution as the part of its educational program. 35.56% if the respondents replied that the numbers of extra – curricular activities conducted by the institution as the part of its educational program were good.

Table 6: Effectiveness on Problem Solving Skill

S.N.	Program	Problem Solving				
		Weaker	Weak	Good	Better	Excellent
1	BBS	-	-	2	5	-
2	B. Ed.	1	5	14	5	1
3	BA	-	-	7	4	1
Total		1	5	23	14	2

Source: Tracer Study Survey 2016

The study also attempted to find out the views of graduates regarding their study experiences at MDC and its support to their employment as well as their expectation and aspirations. 31.12 % of the respondent replied that it was better where as 51.12% told that it was just good enough . Only 2.23% replied that it was weaker.

Table 7: Effectiveness on Work Placement/Attachment

S.N.	Program	Work Placement / Attachment				
		Weaker	Weak	Good	Better	Excellent
1	BBS	3	1	2	1	-
2	B. Ed.	3	7	10	6	-
3	BA	4	4	4	-	-
Total		10	12	16	7	-

Source: Tracer Study Survey 2016

The graduates were also asked about the strengths and weaknesses of the institution in terms its effectiveness on their Work placement/attachment after the completion of the program. 15.56 % of the respondent replied that it was better where as 35.56 % told that it was just good enough.



Table 8: Effectiveness on Teaching/Learning Environment

S.N.	Program	Teaching / Learning Environment				
		Weaker	Weak	Good	Better	Excellent
1	BBS	-	-	3	4	-
2	B. Ed.	-	1	10	12	3
3	BA	-	-	6	5	1
Total		-	1	19	21	4

Source: Tracer Study Survey 2016

The study also attempted to find out the views of graduates regarding their study experiences at MDC and its strength and weaknesses in terms of teaching /learning environment offered by the institution. 46.67 % of the respondent replied that it was better where as 8.89% told that it was just excellent only a 42.23% respondent replied that it was good enough.

Table 9: Effectiveness on Quality of Education Delivered

S.N.	Program	Quality of Education Delivered				
		Weaker	Weak	Good	Better	Excellent
1	BBS	-	-	3	4	-
2	B. Ed.	1	3	8	12	2
3	BA	-	-	5	6	1
Total		1	3	16	22	3

Source: Tracer Study Survey 2016

The graduates were also asked about the strengths and weakness of the quality of education offered to them under various streams 48.89% of the respondents replied that the quality of the education offered to them were better where as 35.56% of the students replied that the quality of the education delivered was good enough.

Table 10: Teacher Student Relationship Status

S.N.	Program	Teacher Student Relationship				
		Weaker	Weak	Good	Better	Excellent
1	BBS	-	-	-	6	1
2	B. Ed.	-	2	6	9	9
3	BA	-	-	1	7	4
Total		-	2	7	22	14

Source: Tracer Study Survey 2016



The graduates were also asked about the teacher student relationship at MDC. 48.89% of the respondents replied that the student teacher relationship was better and 31.12% of the students replied that the student teacher relationship was excellent. 15.56% of the students replied that the student teacher relationship was good enough. Only 4.45% student replied that the student teacher relationship was not good.

Table 11: Strengths and Weakness of Library Services

S.N.	Program	Library Services				
		Weaker	Weak	Good	Better	Excellent
1	BBS	-	1	5	-	1
2	B. Ed.	-	13	10	3	-
3	BA	-	4	6	1	1
Total		-	18	21	4	2

Source: Tracer Study Survey 2016

The graduates were also asked about the strengths and weakness of the institution in terms its library services. 46.67% of the respondent replied that it was good where as 40% told that it was not good enough .8.89% told that it was better.

Table 12: Strengths and Weakness of Lab Services

S.N.	Program	Lab Services				
		Weaker	Weak	Good	Better	Excellent
1	BBS	-	5	2	-	-
2	B. Ed.	5	14	4	3	-
3	BA	2	6	3	-	1
Total		7	25	9	3	1

Source: Tracer Study Survey 2016

The graduates were also asked about the strengths and weakness of the institution in terms its lab services. 20% of the respondent replied that it was good where as 55.56% told that it was weak and 15.56% told that it was weaker. 6.66% told that it was better.

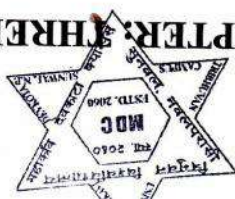


Table 13: Suggestions/Recommendations for the Betterment of Institution

Suggestions / Recommendations	No. of Responses	Percent
1. Improve Library	7	15.56
2. Technical education	8	17.78
3. Add new sufficient books	9	20.00
4. Most organize training to the students	7	15.56
5. Others	14	31.10
Total	45	100.00

The respondents other suggestion includes:

- Learning should relate to their needs and requirements.
- To manage vehicles, drinking water, canteen and wash room.
- There should be the connection between academic and industrial requirements.
- Focus should be provided to skilled based education.
- Technical and practical education should be introduced.
- Provides us to outstanding knowledge in every community and society.



3. Major Findings

The institution (MDC) has taken the graduates of 2016 for the Tracer Study as it had already conducted its first Tracer Study of the graduates of 2014. The graduates from the Faculty of Management, Education and Humanities & Social Science were the students for the tracer study.

The total number of the graduates in 2016 from different streams of Mahakavi Devkota Campus was 53. The graduates from Faculty of Education were 31. Out of which 24 were the female graduates and 7 were male graduates. Out of 31, 9 graduates belonged to educationally disadvantaged groups and 3 of them were dalits. The graduates from Faculty of Management were 8. Out of which 4 were the female graduates and 4 were male graduates. Out of 8, 1 graduates belonged to educationally disadvantaged groups. The graduates from Faculty of Humanities and Social Sciences were 14. Out of which 5 were the female graduates and 9 were male graduates. Out of 14, 4 graduates belonged to educationally disadvantaged groups and 1 of them was dalit.

This Tracer Study report was based on the graduates of 2016 only. The overall objectives of the study were to find out the employment status of graduates, their current position and the study of relevancy of the programs in connection with market requirements. It also aimed at finding out the views of graduates on institutional facilities, curriculum, and future improvements. The study has pointed out following findings:

- The total numbers of respondents were 53. The male were 20 and female were 33.
- The EDJ graduates were 14 and the dalits were only 4.
- Only 46.67 percentages of graduates are employed in the market.
- The unemployed percentage is 53.34.
- Most of the graduates of MDC had the permanent resident in Nawalparasi District.
- The students from the faculty of education were found to have more employability then the faculties of management and Humanities & Social Science.
- The tracer study shows that few graduates from the faculty of management were employed.
- 43.323 % student respondents that the program offered to them was relevant to meet their professional requirement.
- 51.52% respondent replied that the institution is good and 31.12% respondents replied better at the development of problem solving skill.



- 46.67 percent of respondents said that the institution offered good teaching learning environment.
- 48.89 percent of the respondents replied that the quality of education delivered was better.
- 4.45 percent students said that the student teacher relationship was not good.
- 33.34 percent students were found pursuing higher studies.



CHAPTER: FOUR

4. Implications to Institutional Reforms.

The findings of the survey, the institution needs to carryout following improvement plans about the teaching learning environment, quality of delivery, teacher student relationship, extracurricular activities, library/lab facilities etc. The institution has to carryout action research on above aspects on a regular basis. Besides these, following activities are suggested for the institutional reforms:

- Institution has to conduct various level discussions on the Tracer Study Report and its findings.
- Institution has to develop the system of continuous assessment of its programs and collect the feedbacks regularly.
- The college has to make students record keeping system more effective.
- The institution has to offer programs that are market oriented and more practice based.



Conclusion and Recommendation

5.1 Conclusion

From the above findings, a number of conclusions can be drawn about the employment opportunities from our graduates who are currently in the field and the relevancy of the college programs, teaching learning environment, quality of delivery, teacher student relationship, extracurricular activities, library/lab facilities etc. Following are the major conclusions which respond to the research objectives that were set out for this study.

- This study report was the based on the graduates of the year 2016. It aimed at finding out about the employability of the graduates.

- Only 13.34 percent students were found pursuing higher studies.
- Among the employed graduates, more females are employed than males.
- The graduates from the Education and Humanities & Social Science have more chances of getting employed than the graduates faculty of management.
- The analysis of employed shows that job holders are engaged in the field of teaching.
- The findings show that EDJs and Dalits are nominal at their employability is very low.
- The graduates have the expectation that college should help those finding jobs and start market oriented programs.

5.2 Recommendations

The Tracer Study Team conducted the Tracer study of graduates of 2016. The study was conducted within a short period of time. The study was focused on students' personal details, graduates' employability, the effectiveness of college programs, courses, library and lab services, further study situation and feedbacks. Based on the conclusions of the Tracer Study report, following recommendations are suggested:

- The strategic plan of MDC should incorporate the suggestions made on TSR.
- The college should promote professional courses, field based learning, counseling etc.
- The EDJs and Dalit students should be provided more incentives to bring them into the mainstream of the nation.
- MDC should manage its library, lab and canteen facilities.
- MDC should make its record keeping system more effective and soft ware based.
- The institute should maintain better relationship between parent parent-teacher and teacher-students.
- UGC's needs to improve its Tracer Study form/questionnaire to incorporate more information related to unemployed and the studying ones.